



**BUSINESS  
FINLAND**

HELSINKI REGION  
CHAMBER OF COMMERCE

**BUSINESS  
TURKU**

*team*  
**FINLAND**

# EU support in the IPR issues and via Enterprise Europe Network's services

**Johanna Niemistö**

Senior Advisor, Internationalisation

Helsinki Region Chamber of  
Commerce, Enterprise Europe Network  
[johanna.niemisto@chamber.fi](mailto:johanna.niemisto@chamber.fi)



# Content

- **European IP Helpdesk's services**
- **The Ideas Powered for business SME Fund 2025**
- **Enterprise Europe Network's support for the SMEs**



European  
IP Helpdesk

[ec.europa.eu/ip-helpdesk](https://ec.europa.eu/ip-helpdesk)

# European IP Helpdesk

Stay ahead of the innovation game.

Services of the European IP Helpdesk

<https://intellectual-property-helpdesk.ec.europa.eu/>





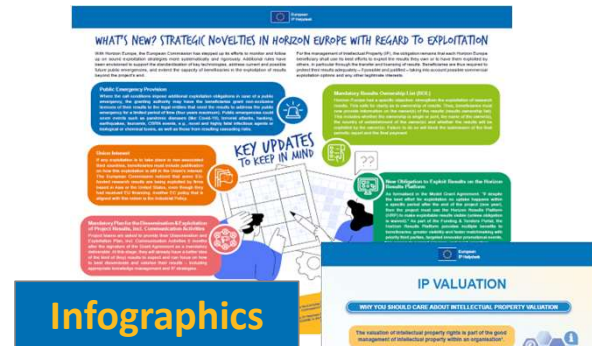
# European IP Helpdesk

- The scope encompasses all forms of IPR
- Providing efficient first-line IP support
- Raising awareness amongst the beneficiaries of EU-funded projects & EU SMEs about the importance of IP management
- Supporting SMEs on IPR issues in cross-border business activities





# Communication & Publication Formats



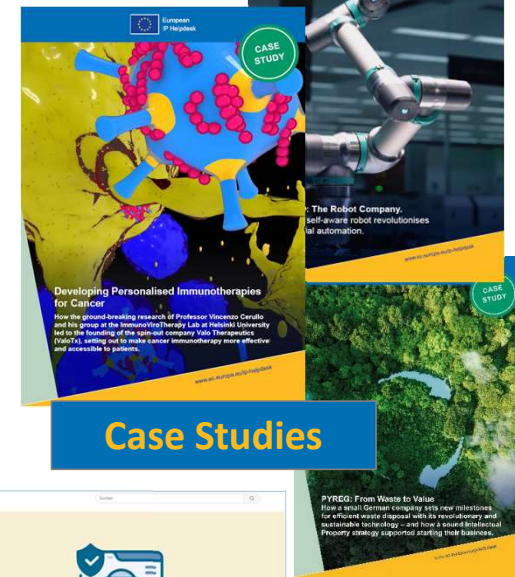
Infographics



Podcast



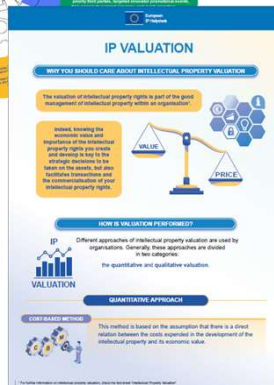
Bulletins



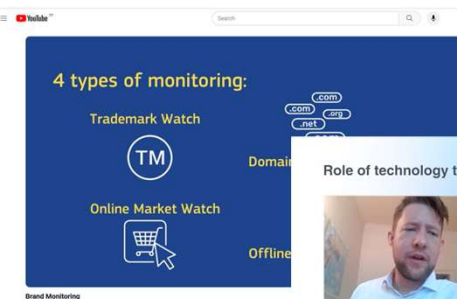
Case Studies



Guides



Fact Sheets



Audio-visual Material





# Training

- **Online & On-site training**
- International **pool of experts** with expertise in specific thematic areas
- Extensive **online training calendar**
  - Regular webinar schedule available on the European IP Helpdesk website
  - Different levels of expertise
  - Broad variety of topics (R&I/HEU, IP in business, sectors)
- Specific **training cooperations** (e.g. EEN, EPO, LESI, ASTP, EIC, Horizon Results Platform)

The screenshot displays the European IP Helpdesk website. On the left, a vertical calendar lists training events from November to December 2023, including webinars on IP Management in ICT Projects, IP Commercialisation & Licensing, Patents and Innovation, Training Coop with LES & EPO, IP and Artificial Intelligence, Plant Variety, Addressing IP impact and innovation, and Maximizing the Impact of (2020/HEU) results. The main content area features a header with navigation links and a section titled 'Training cooperation with the European Patent Academy of the EPO'. Below this, there are three cards: 'Patent protection for EU funding beneficiaries', 'From Lab to Market', and 'IP assessment: how to improve informed decision-making'. To the right, there are three photographs: a large audience in a lecture hall, a person presenting at a TU WIEN booth, and a person presenting at a booth with a large screen. At the bottom, a video player shows a man speaking, with a caption identifying him as Jörg Scherer, Coordinator European IP Helpdesk.

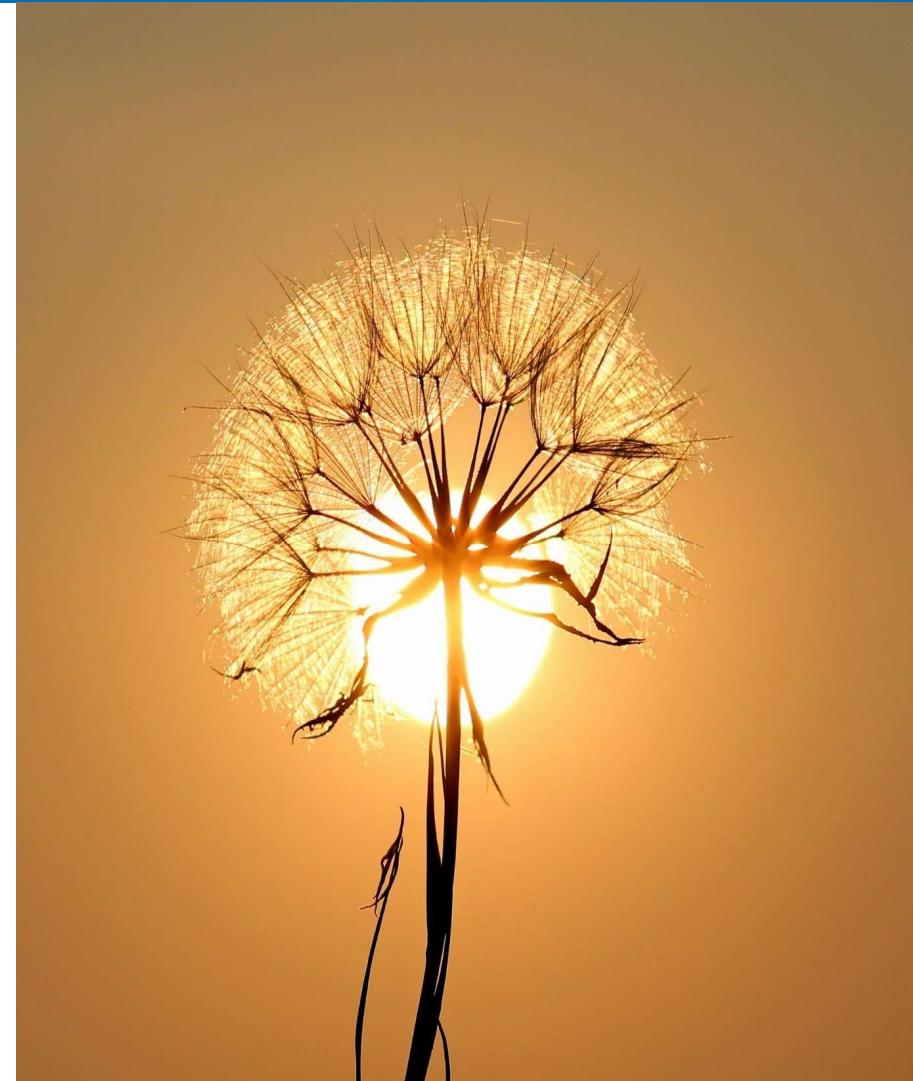


## Webinars

- 20.3. AI Act
- 25.3. IPR and Software
- 26.3. Consortium Agreements
- 9.4. IP and Artificial Intelligence
- 10.4. Transaction Based Growth SUMMIT: “Build-to-Sell”
- 15.4. IP for Future and Emerging Technologies
- 23.4. IP and Artificial Intelligence – Advanced
- 29.4. IP Commercialisation and Licensing

## E-learning

- Introduction to IP (basic), Geographical indications (intermediary)
- IP in Business (basic, intermediary, advanced)
- IP in EU Funded Projects
- Cooperation CPVO





# Helpline

- Free-of-charge, first-line IP support
- Personal and “to the point”
- Answer within 3 working days
- Email, phone and web
- Confidential
- Registration on website and submission of question







## We are family: the IP Helpdesks





# Thank you!

## Get in touch

- [maiya.karkas@chamber.fi](mailto:maiya.karkas@chamber.fi)
- [helpline@iprhelpdesk.eu](mailto:helpline@iprhelpdesk.eu)
- [training@iprhelpdesk.eu](mailto:training@iprhelpdesk.eu)

## Follow & connect



[european-ipr-helpdesk](https://www.linkedin.com/company/european-ipr-helpdesk/)



[@iprhelpdesk](https://twitter.com/iprhelpdesk)

## Sign up for IP Helpdesk's newsletter

<https://ec.europa.eu/newsroom/eis/mae/user-subscriptions/2163/create>





## DISCLAIMER

The European IP Helpdesk provides free-of-charge first-line support on IP-related issues aiming to help current and potential beneficiaries of EU-funded projects, as well as EU SMEs, manage their Intellectual Property assets.

The European IP Helpdesk is managed by the European Commission's European Innovation Council and SMEs Executive Agency (EISMEA), with policy guidance provided by the European Commission's Directorate-General for Research and Innovation (DG RTD).

The information provided by the European IP Helpdesk is not of a legal or advisory nature and no responsibility is accepted for the results of any actions made on its basis. Moreover, it cannot be considered as the official position of EISMEA or the European Commission. Neither EISMEA nor the European Commission nor any person acting on behalf of EISMEA or of the European Commission is responsible for the use which might be made of this information.

© European Union, 2025



## The Ideas Powered for business SME Fund 2025

- The Ideas Powered for business SME Fund is a grant scheme designed to help EU-based small and medium-sized enterprises protect their intellectual property rights.
- The SME Fund is a European Commission initiative implemented by the European Union Intellectual Property Office (EUIPO) and will run from 3 February 2025 to 5 December 2025.
- SME Fund 2025 – EUIPO    Finnish Patent and Registration Office
- The applicant must have a positive decision on support before paying the application and service fees. The aid is paid afterwards.
- Support can be obtained for:
  - IPR pre-analysis service (IP Scan) €1350
  - Application fees for trademark and design rights applications €700
  - **National patents fees and prior art search services €1000 *Temporarily unavailable for new applications***
  - **European patents fees and legal costs €2500**
  - **EU plant breeder's right to an online application and its research fee €1500**
- See the current situation at <https://www.euipo.europa.eu/en/sme-corner/sme-fund/2025/how-to-apply/ip-scan>
- Tip: prepare your application already before and send it immediately when the Fund opens again at the beginning of the year.



**BUSINESS  
FINLAND**

HELSINKI REGION  
CHAMBER OF COMMERCE

**BUSINESS  
TURKU**

*team*  
**FINLAND**

# Enterprise Europe Network's support for the SMEs





# One of the world's largest support Network for innovative SMEs with international ambitions



**450+**  
Organisations



**50+**  
Countries



**3000+**  
Professionals

**Services of the Network are free of charge.**

The Network's operations are funded by the European Commission\* and the Finnish Network partners Business Finland, Helsinki Region Chamber of Commerce and Business Turku.

*\* Enterprise Europe Network is funded through the Single Market Programme (SMP) and implemented by the European Commission's European Innovation Council and SMEs Executive Agency (EISMEA).*

# The Network is active in 50+ countries

 Austria	 Belgium	 Bulgaria	 Croatia	 Cyprus	 Czechia
 Denmark	 Estonia	 Finland	 France	 Germany	 Greece
 Hungary	 Ireland	 Italy	 Latvia	 Lithuania	 Luxembourg
 Malta	 Netherlands	 Poland	 Portugal	 Romania	 Slovakia
 Slovenia	 Spain	 Sweden			

---

 Albania	 Armenia	 Bosnia And Herz	 Brazil	 Canada	 Chile
 Colombia	 Egypt	 French Polynesia	 Iceland	 India	 Israel
 Japan	 Kosovo	 Montenegro	 New Zealand	 North Macedonia	 Norway
 Serbia	 Singapore	 South Korea	 Switzerland	 Taiwan	 Tunisia
 Turkey	 Ukraine	 United Kingdom	 United States	 Vietnam	

## Some of the Network partners

**almi**

Tehnopol



**INSTITUTE OF PHYSICS**  
National academy of Sciences of Ukraine

**NBank**

Wir fördern Niedersachsen



Region Stuttgart



Innovate  
UK



Forschung wirkt.

bayern innovativ

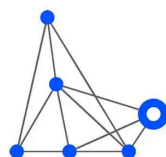


Food & Bio Cluster  
Denmark

**wateralliance**



Schweizerische Eidgenossenschaft  
Confédération suisse  
Confederazione Svizzera  
Confederaziun svizra



**Erhvervshus**  
HOVEDSTADEN

**ZENIT**



一般財団法人  
日欧産業協力センター  
EU-Japan Centre  
for Industrial Cooperation



**CHAMBRE DE COMMERCE  
ET D'INDUSTRIE**

## In Finland 14 Advisors in 7 cities

### **Business Finland – Network Coordinator**

Oulu: Teija Pakanen

Tampere: Maarit Vuorio

Helsinki: Emmi Nahi

Rovaniemi: Katja Lustila

### **Helsinki Region Chamber of Commerce**

Helsinki: Maija Kärkäs, Johanna Marin-Hyppönen,  
Johanna Niemistö, Mika Lahtinen, Outi Toivanen

### **Business Turku**

Turku: Olli Mankonen,

Megumi Hayashi, Timo Huttunen

Mikkeli: Mari Kivinen

Seinäjoki: Satu Alapiha



**BUSINESS  
FINLAND**

HELSINKI REGION  
CHAMBER OF COMMERCE

**BUSINESS  
TURKU**

# Market information and advice on internationalization, legislation and access to finance

- **General country and market information**, contact information of companies and organizations in different countries
- **General legal advice on international issues**: effects and implementation of EU regulations, national legislation of different countries, international trade agreements and disputes, transport conditions, taxation, customs, CE marking, public procurement, European IP Helpdesks
- **EU funding advice**: information about EU funding programs and application periods, support in mapping out a suitable EU funding program. Companies are also supported by [Business Finland's EU Funding Advisory Service](#)
- **Information** through events, newsletter, web page and social media





# Services for finding international co-operation partners

We help SMEs find international technology, business and research partners

- **Partnering Opportunities Database**

thousands of partnering opportunities from various industries looking for a local partner (retailer, importer, manufacturer, product development or research partner) <https://een.ec.europa.eu/partnering-opportunities>

- **B2B Matchmaking Events**

pre-arranged and scheduled bilateral business meetings (B2B, matchmaking, brokerage event), on-site or online, usually at international trade fair or conference. Every year, hundreds of events from different industries take place all over Europe / world. Also customised business contact trips.

<https://www.een.fi/tapahtumat/>

<https://een.ec.europa.eu/events>



# Business Opportunities Database – examples

## Looking for partners

[German SME is looking for suppliers and technology partners for modular underwater robotics and next-generation marine technologies](#)

[Maltese food manufacturing company seeks international expertise in Digitalisation and Automation.](#)

[Spanish SME is looking for an AI experienced partner to optimise and digitise seedbeds production process to submit a proposal to Eurostars programme in September 2025](#)

[Italian airport is looking for innovative solutions that allow prior assessment of electromagnetic interference caused by photovoltaic panels in airport infrastructures](#)

[Austrian company seeking for long-term partners \(supplier agreement\) for the development of \(high-quality\) plastic housings for electronic device.](#)

[SME in Sweden seeking partners for collaborations in a project \(Eurostars or Horizon\) within development of targeted delivery formulations, innovative approach of managing chronic pain in knee osteoarthritic patients and AI platform.](#)

# Upcoming events, see more at [www.een.fi](http://www.een.fi)

- 10.03.2025 - 09.08.2025 [German-Finnish Joint R&D Projects Matchmaking 2025, online](#)
- 18.-20.3.2025 [EnergyWeek 2025 Matchmaking, Vaasa](#)
- 18.03.2025 - 28.03.2025 [IPEC 2025 – AI-Driven Innovations for Sustainable Industry in Europe, Conference & Matchmaking, online](#)
- 24.03.2025 [Mitä kiertotalousyritykset tarvitsevat kasvuun? Webinaari](#)
- 25.03.2025 [Vientikaupan rahoitus – Kilpailukykyä vastuullisesta viennistä, Helsinki \(hybridi\)](#)
- 26.03.2025 [WTC & EEN iltapäivä: EU:n tutkimus, kehitys ja innovaatorahoitus tutuksi, Turku](#)
- 01.04.2025 - 10.04.2025 [Cybersecurity B2B Meetings | Forum InCyber 2025 + online](#)
- 07.04.2025 - 11.04.2025 [digitalHealthCapital @DMEA2025, Berliini & online](#)
- 10.04.2025 [Expand Your Business to the DACH Region – Why Austria is the Ideal Gateway, Helsinki & online](#)
- 03.06.2025 - 05.06.2025 [Calling all start-ups: Pitch at EBAN Congress 2025 on 3-5 June in Copenhagen!](#)
- 04.06.2025 - 05.06.2025 [World Sauna Forum 2025 Matchmaking, Jyväskylä + online](#)

# Sustainability, feedback to the Commission

- Services for developing company's **sustainability**  
- events, funding advice, advice how to work in more circular way, ESG etc. (Outi Toivanen, HRCC)
- Channels for SMEs to give **feedback to European Commission** - SOLVIT, feedback on internal markets problems, feedback for Commission surveys



#EENCanHelp

# Thank you

[www.een.fi](http://www.een.fi) & [een.ec.europa.eu](http://een.ec.europa.eu)

LinkedIn: Enterprise Europe Network (EEN) Finland

**Johanna Niemistö**

Helsinki Region Chamber of Commerce

[johanna.niemisto@chamber.fi](mailto:johanna.niemisto@chamber.fi)

